

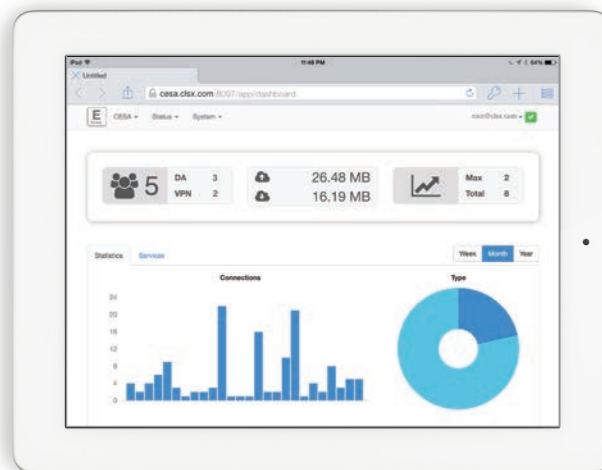
Celestix Edge Series featuring SecureAccess

The Celestix Edge Series brings the power of Microsoft® Remote Access into your datacenter and tightly integrates with on-premises file storage. Our dedicated hardware and management software extends the best of Microsoft's battle-tested Cloud OS software, based on Windows Server® 2012 R2, into a rapidly deployed, secure platform.

Comet Management Interface

Celestix Edge Series manages the Windows Server 2012 R2 Remote Access platform from a proprietary simplified web interface – Comet. Comet delivers functionality like centralized configuration, enhanced reporting, and remote monitoring to simplify Windows Server 2012 R2 Remote Access deployments.

- One click to install a major service (DirectAccess/VPN, Work Folders, Web Application Proxy)
- Quick access to service status and client usage information
- Enhanced reporting for monitoring and compliance requirements
- Efficient troubleshooting for DirectAccess client connections
- Streamlined connection to Remote Access advanced management



SecureAccess

The innovative SecureAccess feature gives both Windows Professional and Mac users the seamless, transparent DirectAccess experience that Windows Enterprise have enjoyed for years. Remote users automatically connect to the office network when they have an Internet connection.

Enhanced and Mobile-Friendly Management Interface

The Comet HTML5-based management console is cross-platform friendly and enables remote management using any browser on any device. It provides administrators with a highly intuitive and easy-to-navigate interface that will streamline configuration and management.

On-Premises Data, Anywhere Access

Easy Work Folders configuration to synchronize access to work files on centrally managed file servers from multiple devices. Single point of access where data security policies, like automatic backup, encryption, and restricted access can be applied.

Remote Access ‘Kill Switch’

The Remote Access Dashboard provides an instant view of current DirectAccess and VPN connections. The ‘kill switch’ feature allows an administrator to proactively terminate a connection at any time. Options include:

03/25/2015 17:15:49 CLX\WIN8-PCS DirectAccess

Details			
AuthMethod	Machine Kerberos & User Kerberos	ClientExternalAddress	0.0.0.0
ClientIPv6Address	2002:b817:9c87:1000:f595:68fb:1bef:8889	ClientIPv4Address	0.0.0.0
ConnectionType	DirectAccess	ConnectionDuration	976
HostName	CLX\WIN8-PCS	ConnectionStartTime	03/25/2015 17:15:49
Protocol	IPHttps	HealthStatus	Not Applicable
TotalBytesIn	8616	PSComputerName	
TransitionTechnology	IPHttps	SessionId	27114
UserName		TotalBytesOut	8888
		TunnelType	Esp

Connections (6)

Reset Connection Disable Remove

Reset Connection – reset the client to re-establish the connection. This is useful in troubleshooting scenarios.

Disable – disable both the connection and the client's computer account in Active Directory, which prevents the client from re-establishing a connection. This is useful when a client has become infected with malware. Once the client has been remediated, enabling the Active Directory account allows the client to re-establish remote network connectivity.

Remove – remove the connection and delete the computer's Active Directory account, permanently preventing the client from establishing a connection. This is useful when a client is lost, stolen or compromised.

Celestix Edge Summary

The Celestix Edge E and VE Series provide secure access to on-premises as well as private, public and hybrid cloud environments. Both versions support traditional VPN, DirectAccess, web application proxy, Remote Desktop Gateway, site-to-site VPN, as well as Hyper-V Virtual Network Gateway from a single command center. Ultimately, this empowers IT administrators to efficiently handle datacenter and cloud workloads, while supporting employees with transparent connections from any location and from any device.

Celestix Edge Security Appliance Highlights

(applies to both physical and virtual appliances)

- Windows Server 2012 R2 based appliance
- Removes the complexity of tying together diverse connectivity options through our easy setup
- Unified Remote Access:
 - DirectAccess provides secure always-on connectivity for Windows 7/8/8.1 Enterprise clients.
 - EdgeProtect provides secure always-on connectivity for Windows 7/8/8.1 Professional clients & Mac OSX
 - Remote Access "Kill Switch".
- Remote Desktop Gateway for full remote desktop connectivity
- Remote Access Dashboard
- Enhanced reporting
- DirectAccess client diagnostics and Client Management
- Alerting and Monitoring
- Web Application Proxy for secure on-premises web site access and identify federation
- Work Folders enable your users to sync their work files from a corporate server to supported devices

E Series



Model	E3600	E6600	E8600
Recommended users*	below 500 concurrent users	500 to 3,000 concurrent users	up to 7,000 concurrent users
Appliance Software	Celestix Edge 2.20.0	Celestix Edge 2.20.0	Celestix Edge 2.20.0
Form factor	1U	1U	1U
Operating System	Windows Server 2012 R2 (hardened)	Windows Server 2012 R2 (hardened)	Windows Server 2012 R2 (hardened)
CPU	Intel i5	Intel® Xeon® E3-1270v5	2 x Intel® Xeon® E5-2620v4
Memory	8 GB	16 GB	16 GB
Hard drive	SATA-III Hard Drive	2 x SAS hot-swappable hard drive	4 x SAS hot-swappable hard drive
Disk Mirror RAID	-	RAID 1	RAID 10
Power supply	220W auto-switching universal 110/220V AC power supply	2 x 900W redundant auto-switching universal AC power supply	2 x 900W redundant auto-switching universal AC power supply
Optional	-	Smart Encryption Module (FIPS-2 Certified)	Smart Encryption Module (FIPS-2 Certified)
Dimensions (H x W x L)	1.75" (4.44cm) Height x 17.3" (43.94cm) Width x 13" (33.02cm) Length	1.70" (4.32cm) Height x 15.05" (38.22cm) Depth x 17.11" (43.46cm) Length	1.7" (4.3cm) Height x 17.1" (43.5cm) Width x 23.9" (60.8cm) Length
Order Number	E3600	E6600	E8600
Appliance	EA2-22210-014	EA2-22215-014	EA2-22218-014
1 Year 8x5 Support	EFS-22210-100	EFS-22215-100	EFS-22218-100
3 Year 8x5 Support	EFS-22210-300	EFS-22215-300	EFS-22218-300
1 Year 24x7 Support	TFS-22210-100	TFS-22215-100	TFS-22218-100
3 Year 24x7 Support	TFS-22210-300	TFS-22215-300	TFS-22218-300

VE Series (Virtual Appliance)

Model	VE3	VE6	VE8
Max. vCores	2	4	8
Max. vRAM	8GB	16GB	32GB
Con-concurrent Users	300	300 to 3,000	up to 5,000
Order Number	VE3	VE6	VE8
Appliance	EA2-24210-014	EA2-24215-014	EA2-24218-014
1 Year 8x5 Support	EFS-24210-100	EFS-24215-100	EFS-24218-100
3 Year 8x5 Support	EFS-24210-300	EFS-24215-300	EFS-24218-300
1 Year 24x7 Support	TFS-24210-100	TFS-24215-100	TFS-24218-100
3 Year 24x7 Support	TFS-24210-300	TFS-24215-300	TFS-24218-300