

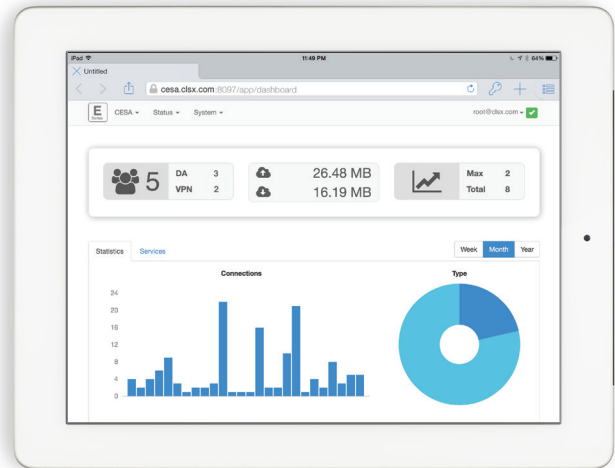
Celestix Edge Series featuring SecureAccess

The Celestix Edge Series brings the power of Microsoft® Remote Access into your datacenter and tightly integrates with on-premises file storage. Our dedicated hardware and management software extends the best of Microsoft’s battle-tested Cloud OS software, based on Windows Server® 2012 R2, into a rapidly deployed, secure platform.

Comet Management Interface

Celestix Edge Series manages the Windows Server 2012 R2 Remote Access platform from a proprietary simplified web interface – Comet. Comet delivers functionality like centralized configuration, enhanced reporting, and remote monitoring to simplify Windows Server 2012 R2 Remote Access deployments.

- One click to install a major service (DirectAccess/VPN, Work Folders, Web Application Proxy)
- Quick access to service status and client usage information
- Enhanced reporting for monitoring and compliance requirements
- Efficient troubleshooting for DirectAccess client connections
- Streamlined connection to Remote Access advanced management



SecureAccess

The innovative SecureAccess feature gives both Windows Professional and Mac users the seamless, transparent DirectAccess experience that Windows Enterprise have enjoyed for years. Remote users automatically connect to the office network when they have an Internet connection.

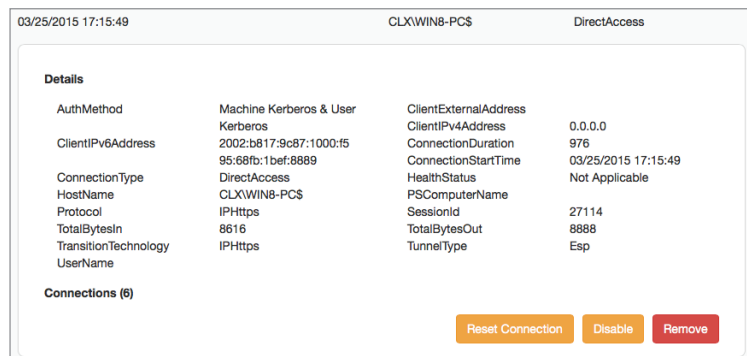
Enhanced and Mobile-Friendly Management Interface

The Comet HTML5-based management console is cross-platform friendly and enables remote management using any browser on any device. It provides administrators with a highly intuitive and easy-to-navigate interface that will streamline configuration and management.

On-Premises Data, Anywhere Access

Easy Work Folders configuration to synchronize access to work files on centrally managed file servers from multiple devices. Single point of access where data security policies, like automatic backup, encryption, and restricted access can be applied.

Remote Access ‘Kill Switch’



The Remote Access Dashboard provides an instant view of current DirectAccess and VPN connections. The ‘kill switch’ feature allows an administrator to proactively terminate a connection at any time. Options include:

Reset Connection – reset the client to re-establish the connection. This is useful in troubleshooting scenarios.

Disable – disable both the connection and the client’s computer account in Active Directory, which prevents the client from re-establishing a connection. This is useful when a client has become infected with malware. Once the client has been remediated, enabling the Active Directory account allows the client to re-establish remote network connectivity.

Remove – remove the connection and delete the computer’s Active Directory account, permanently preventing the client from establishing a connection. This is useful when a client is lost, stolen or compromised.

Celestix Edge Summary

The Celestix Edge Security Appliance series addresses private cloud, public cloud, and edge management in one unified platform. Traditional remote access and perimeter management is combined with cloud-ready datacenter appliances and virtual appliances for complete end-to-end management of all on-premises and cloud access. Celestix E Series security appliance makes the hybrid cloud real.

E Series Edge Security Appliance

Celestix E Series security appliances combine traditional enterprise, private cloud, and hybrid cloud connectivity into an integrated and easy-to-manage platform. Clients can connect to resources regardless of where they are located or what device is used. Supports traditional VPN, DirectAccess, web publishing, Remote Desktop Gateway, site-to-site VPN, as well as Hyper-V Virtual Network Gateway. Supports all mobile and enterprise devices.

E Series Virtual Edge Security Appliance

The E Series Virtual Security Appliance extends the Microsoft Cloud OS into the hosted cloud. The Cloud OS is optimized for Azure, and we extend this to seamlessly connect third-party clouds like Amazon Web Services. Supports multi-cloud redundant architectures and ensures secure end-to-end connectivity between your private cloud and your public cloud virtual networks.

Celestix Edge Security Appliance Highlights

(applies to both physical and virtual appliances)

- Windows Server 2012 R2 based appliance
- Removes the complexity of tying together diverse connectivity options through our easy setup
- Unified Remote Access:
 - DirectAccess provides secure always-on connectivity for Windows 7/8/8.1 Enterprise clients.
 - EdgeProtect provides secure always-on connectivity for Windows 7/8/8.1 Professional clients & Mac OSX
 - Remote Access "Kill Switch".
- Remote Desktop Gateway for full remote desktop connectivity
- Remote Access Dashboard
- Enhanced reporting
- DirectAccess client diagnostics and Client Management
- Alerting and Monitoring
- Web Application Proxy for secure on-premises web site access and identify federation
- Work Folders enable your users to sync their work files from a corporate server to supported devices

E Series



Model	E3600	E6600	E8600
Recommended users*	below 500 concurrent users	500 to 3,000 concurrent users	up to 7,000 concurrent users
Appliance Software	Celestix Edge 2.20.0	Celestix Edge 2.20.0	Celestix Edge 2.20.0
Form factor	1U	1U	1U
Operating System	Windows Server 2012 R2 (hardened)	Windows Server 2012 R2 (hardened)	Windows Server 2012 R2 (hardened)
CPU	Intel i5	Intel® Xeon® E3-1270v5	2 x Intel® Xeon® E5-2620v4
Memory	8 GB	16 GB	16 GB
Hard drive	SATA-III Hard Drive	2 x SAS hot-swappable hard drive	4 x SAS hot-swappable hard drive
Disk Mirror RAID	-	RAID 1	RAID 10
Power supply	220W auto-switching universal 110/220V AC power supply	2 x 900W redundant auto-switching universal AC power supply	2 x 900W redundant auto-switching universal AC power supply
Optional	-	Smart Encryption Module (FIPS-2 Certified)	Smart Encryption Module (FIPS-2 Certified)
Dimensions (H x W x L)	1.75" (4.44cm) Height x 17.3" (43.94cm) Width x 13" (33.02cm) Length	1.70" (4.32cm) Height x 15.05" (38.22cm) Depth x 17.11" (43.46cm) Length	1.7" (4.3cm) Height x 17.1" (43.5cm) Width x 23.9" (60.8cm) Length

VE Series (Virtual Appliance)

Model	VE3	VE6	VE8
Max. vCores	2	4	8
Max. vRAM	8GB	16GB	32GB
Recommended Con-concurrent Users	300	300 to 3,000	up to 5,000

Celestix Networks, Inc.
 3125 Skyway Court
 Japan +81 03 5210 2991
 Fremont, California 94539
 +1 510 668 0700
 sales@celestix.com

EMEA Office
 Enterprise House
 95 London Street
 Reading RG1 4QA
 +44 (0) 118 959 6198

Singapore Office
 62 Ubi Road 2
 #04-07 Oxely Bizhub 2
 Singapore 408734
 +65 6781-0700

Japan Office
 2-12-4 Hirakawa-Cho
 Chiyoda-ku
 Tokyo Japan
 +81 3 5210 2991