

Celestix SecureAccess

Always-On VPN

Celestix SecureAccess is a Unified Remote Access solution that provides not only the always-on VPN connectivity, but also the features of Microsoft DirectAccess from a single platform without the hassle of dealing with different cross-vendor solutions. The solution consists of the SecureAccess server, DirectAccess clients (available free in Windows Enterprise Edition) and the Celestix SecureAccess clients for Windows Pro, Ultimate editions and OSX. The SecureAccess server is available in E Series appliances and the V Series virtual appliances.

URA Management Interface

Celestix SecureAccess manages the Unified Remote Access platform from a simplified web interface that delivers functionality like centralized configuration, enhanced reporting, and remote monitoring to simplify Remote Access deployments.

- One click to install a major service (DirectAccess/VPN, Work Folders, Web Application Proxy)
- Quick access to service status and client usage information
- Enhanced reporting for monitoring and compliance requirements
- Efficient troubleshooting for DirectAccess client connections
- Streamlined connection to Remote Access advanced management

SecureAccess Clients

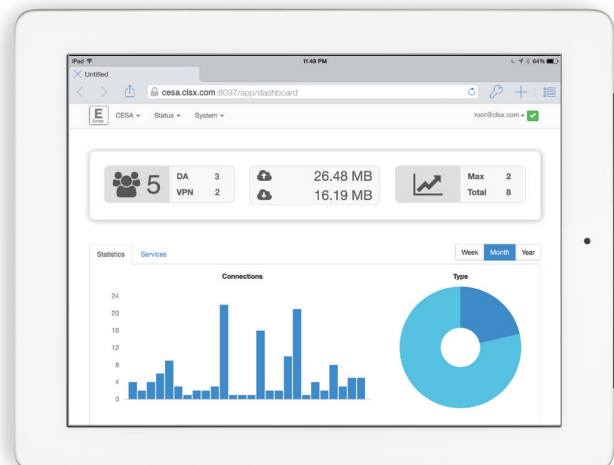
The innovative SecureAccess feature gives both Windows Professional and Mac users the seamless, transparent always-on VPN experience that Windows Enterprise have enjoyed for years. Remote users automatically connect to the office network when they have an Internet connection.

Enhanced and Mobile-Friendly Management Interface

The HTML5-based management console is cross-platform friendly and enables remote management using any browser on any device. It provides administrators with a highly intuitive and easy-to-navigate interface that will streamline configuration and management.

HIGHLIGHTS

- Unified Remote Access:
 - DirectAccess provides secure always-on connectivity for Windows 7/8/8.1 Enterprise clients
 - SecureAccess provides secure always-on connectivity for Windows 7/8/8.1 Professional clients & Mac OSX
 - Remote Access "Kill Switch"
- Remote Desktop Gateway for full remote desktop connectivity
- Unified Remote Access Dashboard
- Enhanced reporting
- DirectAccess/SecureAccess client diagnostics and Client Management
- Alerting and Monitoring
- Web Application Proxy for secure on-premises web site access and identify federation
- Work Folders enable your users to sync their work files from a corporate server to supported devices



On-Premises Data, Anywhere Access

Easy Work Folders configuration to synchronize access to work files on centrally managed file servers from multiple devices. Single point of access where data security policies, like automatic backup, encryption, and restricted access can be applied.

Remote Access 'Kill Switch'

The Remote Access Dashboard provides an instant view of current DirectAccess and VPN connections. The 'kill switch' feature allows an administrator to proactively terminate a connection at any time. Options include:

Reset Connection – reset the client to re-establish the connection. This is useful in troubleshooting scenarios.

Disable – disable both the connection and the client's computer account in Active Directory, which prevents the client from re-establishing a connection. This is useful when a client has become infected with malware. Once the client has been remediated, enabling the Active Directory account allows the client to re-establish remote network connectivity.

Celestix SecureAccess Appliance

E Series



Model	E3600	E6600	E8600
Recommended users*	below 500 concurrent users	500 to 3,000 concurrent users	up to 7,000 concurrent users
Appliance Software	Celestix Comet 2.20.0	Celestix Comet 2.20.0	Celestix Comet 2.20.0
Form factor	1U	1U	1U
Operating System	Windows Server 2012 R2 (hardened)	Windows Server 2012 R2 (hardened)	Windows Server 2012 R2 (hardened)
CPU	Intel i5	Intel® Xeon® E3-1270v5	2 x Intel® Xeon® E5-2620v4
Memory	8 GB	16 GB	16 GB
Hard drive	SATA-III Hard Drive	2 x SAS hot-swappable hard drive	4 x SAS hot-swappable hard drive
Disk Mirror RAID	-	RAID 1	RAID 10
Power supply	220W auto-switching universal 110/220V AC power supply	2 x 900W redundant auto-switching universal AC power supply	2 x 900W redundant auto-switching universal AC power supply
Optional	-	Smart Encryption Module (FIPS-2 Certified)	Smart Encryption Module (FIPS-2 Certified)
Dimensions (H x W x L)	1.70" (4.32cm) H x 15.05" (38.22cm) D x 17.11" (43.46cm) L	1.70" (4.32cm) H x 15.05" (38.22cm) D x 17.11" (43.46cm) L	1.7" (4.3cm) H x 17.1" (43.5cm) W x 23.9" (60.8cm) L

V Series (Virtual Appliance)

Model	V3	V6	V8
Max. vCores	2 Core	4 Core	8 Core
Max. vRAM	8 GB	16 GB	32 GB
Recommended Users	300 concurrent users	300 to 3,000 concurrent users	up to 5,000 concurrent users

CELESTIX NETWORKS, INC.

Headquarters

3125 Skyway Court
Fremont, California 94539
+1 510 668 0700
sales@celestix.com

Europe, Middle East & Africa

Enterprise House
95 London Street
Reading RG1 4QA
United Kingdom
+44 (0) 118 959 6198

Asia, Australia & New Zealand

62 Ubi Road 1
#04-07 Oxely Bizhub 2
Singapore 408734
+65 6781 0700

Japan

2-12-4 Hirakawa-Cho
Chiyoda-ku
Tokyo, Japan
+81 3 5210 2991